

A PROJECT BY



DEVELOPER

SANMAG BUILDCON LLP

17th Floor, Sankalp Square 3-A, Taj Skyline,
Sindhu Bhavan Road, Ahmedabad, Gujarat 380058, India

ARCHITECT



STRUCTURAL ENGINEER



NOTES:

All rights for materials and plans remains with the developer.
This brochure is not a binding document and is meant only for display purpose.
The developer reserves the right to change or revise the scheme or part of the scheme or any details there of.
No external changes shall be permitted. Dimensions mentioned here are approximate.

This brochure is intended only for easy display and information of the scheme and
does not form part of legal document.

For Further Inquiry Contact

+91 99099 18710

email : property@sankalponline.com

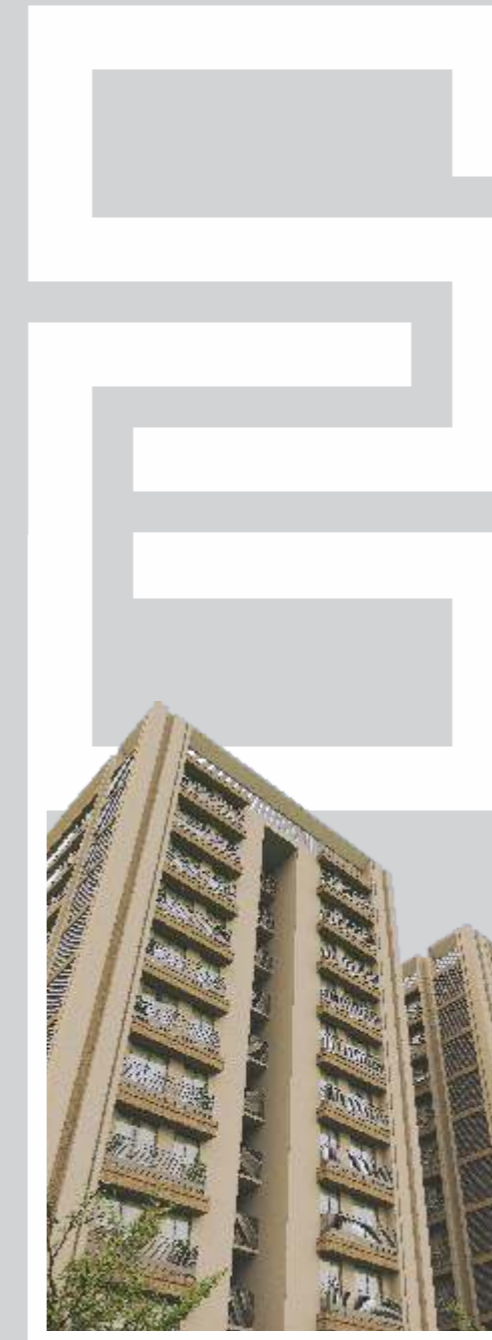
www.sankalpproperty.com

PROJECT NAME : SANKALP GWALA

RERA REGISTRATION NO. : PR/GJ/AHMEDABAD/AHMEDABAD CITY/AUDA/RAA11115/311222

RERA WEBSITE : <https://gujrera.gujarat.gov.in>

Brochure Design and Production by
ARTIZE
+91 9825709244



A GRAND LIFE BEGINS HERE

**SANKALP
GWALA**

3 BHK GRANDEUR LIVING SPACE



**EXPLORE
THE GRAND EXPERIENCE
WHICH YOU DESERVE**

Sankalp Gwala is a luxurious residential initiative that blends a perfect location, a marvellous elevation, and a holistic lifestyle experience for the elite in town, brace yourself for elegant abodes that will define your moments and memories with happiness.



**SANKALP
GWALA**
3 BHK GRANDEUR LIVING SPACE



With decades of experience in real estate and construction, Sankalp Group is a unique firm that presents the best features of residential and commercial spaces. The group brings to the fore, expertise and experience to create brilliant structures that fulfil different requirements. Sankalp Gwala continues the group's legacy with a better and bigger vision than ever before.



WELCOME TO THE PARADISE OF YOUR DESIRE....



SANKALP GWALA

3 BHK GRANDEUR LIVING SPACE

ALL HUMAN BEINGS ARE
BORN EQUAL BUT
SOME LIVE DIFFERENTLY.



GRAND LOCATION



GRAND LIVING SPACE



GRAND AMENITIES



GRAND



GRAND LOCATION

Sankalp Gwala is situated at the most desirable extension of Sindhu Bhavan Road near SP Ring Road, in the neighborhood of huge residential developments, best schools, colleges, hospitals, shopping malls, sports facilities, multiplexes, hotels and religious places. Your every desire is just 5 minutes away from Sankalp Gwala.



CAMPUS FEATURES

- 2 Premium Lift for each block.
- Finished Staircase.
- Elegant Entrance foyer at ground floor level with granite/marble flooring.
- Compound Pavement with designer tiles/naturale stone or blocks.
- Attractive entry gate with provision of Security Cabin.
- Professionally designed Landscape garden and ample parking facility and decorative lighting.
- Borewell for water supply with UG Tank and OH Tank.
- **ALLOTTED Parking**



GROUND FLOOR PLAN





**SANKALP
GWALA**

3 BHK GRANDEUR LIVING SPACE

Design is not just about creating something aesthetically pleasing, but making something that improves the quality of life. That's the reason why a lot of thought has been put into each and every aspect of design at Sankalp Gwala. Right from the design of the overall building to the design of each apartment. Spacious rooms that gives a sense of freedom, windows that open to an uninterrupted view, built quality that makes you feel secure, and many such features come together to give you a home which is the next best thing in your life.

Taking design to a whole new level.



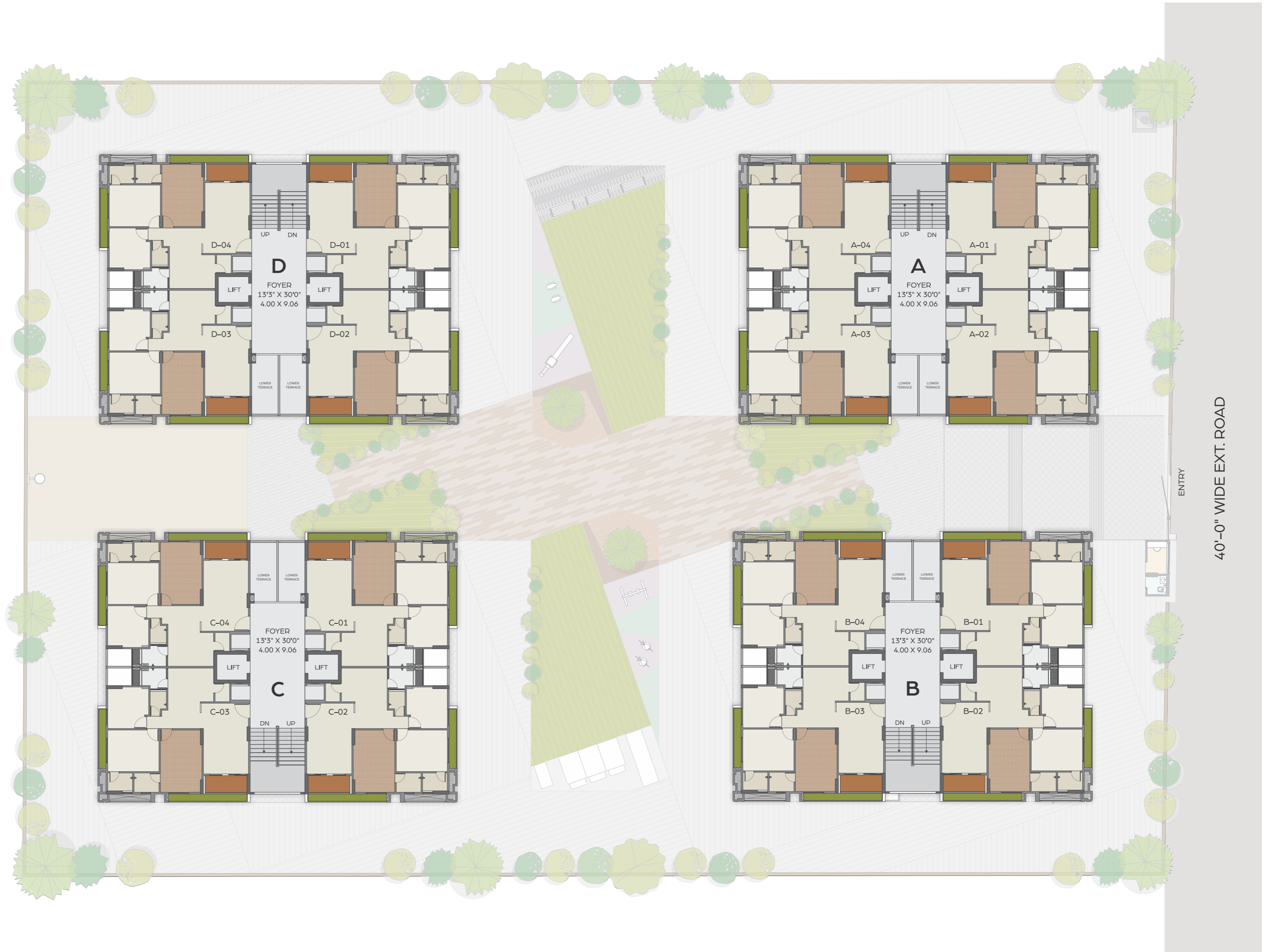
**SANKALP
GWALA**
3 BHK GRANDEUR LIVING SPACE

•
Infinite View
from all flats

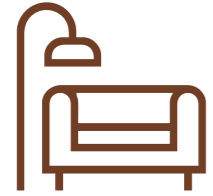
•
Enormous Distance
between each blocks



TYPICAL FLOOR PLAN



ENTRY
40'-0" WIDE EXT. ROAD

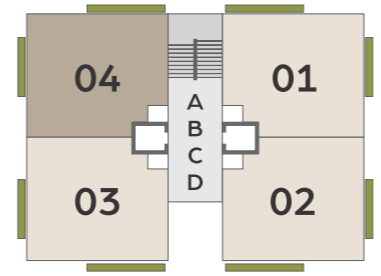


GRAND LIVING SPACE

Sankalp Gwala is designed to connect you around the nature and is sure to bring more physical and psychological benefits beyond the imagination.

At Sankalp Gwala, we've created a whole new building typology where you will get clean, unrestricted, panoramic views from your drawing room and bedrooms. Your apartments receive profuse natural light and great ventilation. Large window in your drawing room makes entire space better, opening up for breathtaking, panoramic views.

Actually, views matter more than you think.





SPECIFICATIONS

	STRUCTURE	<ul style="list-style-type: none"> • RCC frame structure over stilts and basement.
	PLASTER WORK	<ul style="list-style-type: none"> • Polymer textured external walls with acrylic paint. • Plastered internal walls with white cement based putty.
	FLOORING AND TILING	<ul style="list-style-type: none"> • Drawing + Kitchen – 600 x 1200 • Bedroom – 600 x 600 • Master Bedroom – wooden flooring • Washroom tile provided size – 2'x2' • Kitchen wall dado – 2' x 1' • Tiles dado in all toilets up to lintel level
	DOORS & WINDOWS	<ul style="list-style-type: none"> • Powder coated aluminium frame sliding windows with clear glass. • Window anodized aluminium section • All internal doors in laminates with wooden frame • Main door in veneer with wooden frame • Granite jambs for all windows
	ELECTRICAL	<ul style="list-style-type: none"> • Concealed electrical copper wiring (ISI) with ample electrical points and MCB/ELCB protection. • Premium quality modular switches. • Provision for DTH tv connectivity in drawing room. • Provision for internet connectivity. • Electric points for geyser in all toilets.
	KITCHEN	<ul style="list-style-type: none"> • Premium quality granite top kitchen platform. • Premium SS sink with drain board. Carysil/ Nirali or similar make. • Provision for convenient water purifier installation. • Provision for convenient washing machine installation. • Kitchen tile provided – 2' x 1' size • Kota shelf in store with tiles dado
	PLUMBING AND SANITATION	<ul style="list-style-type: none"> • Good quality concealed CPVC/UPVC internal plumbing lines in all toilets and kitchen. • Suspended drainage lines in all toilets with false ceiling for easy maintenance. • Jaquar / Kohler Sanitarywear



GRAND AMENITIES

Sankalp Gwala features spectacular amenities, which provides terrific options for residents to live a King size lifestyle.



24 X 7
SECURITY



CCTV
SURVEILLANCE



ATTRACTIVE
FOYER



2 LIFT IN
EACH BLOCK



BASKET BALL



GYMNASIUM



INDOOR
GAMES



CHILDREN PLAY AREA
AND TODDLER ZONE



GAZEBO



HUGE
LAWN AREA



MULTI PURPOSE
HALL



SENIOR CITIZEN
SITOUT



SUFFICIENT
PARKING



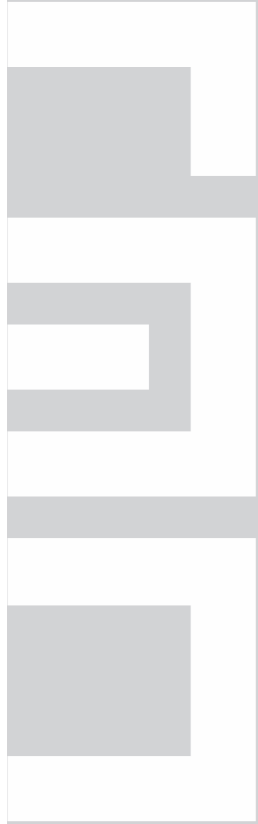
SOCIETY
OFFICE



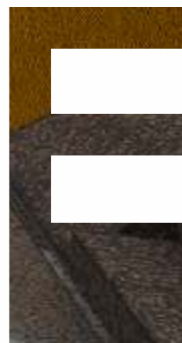
POWER
GENERATOR



BOREWELL



A POSITIVE & REFRESHING ENVIRONMENT

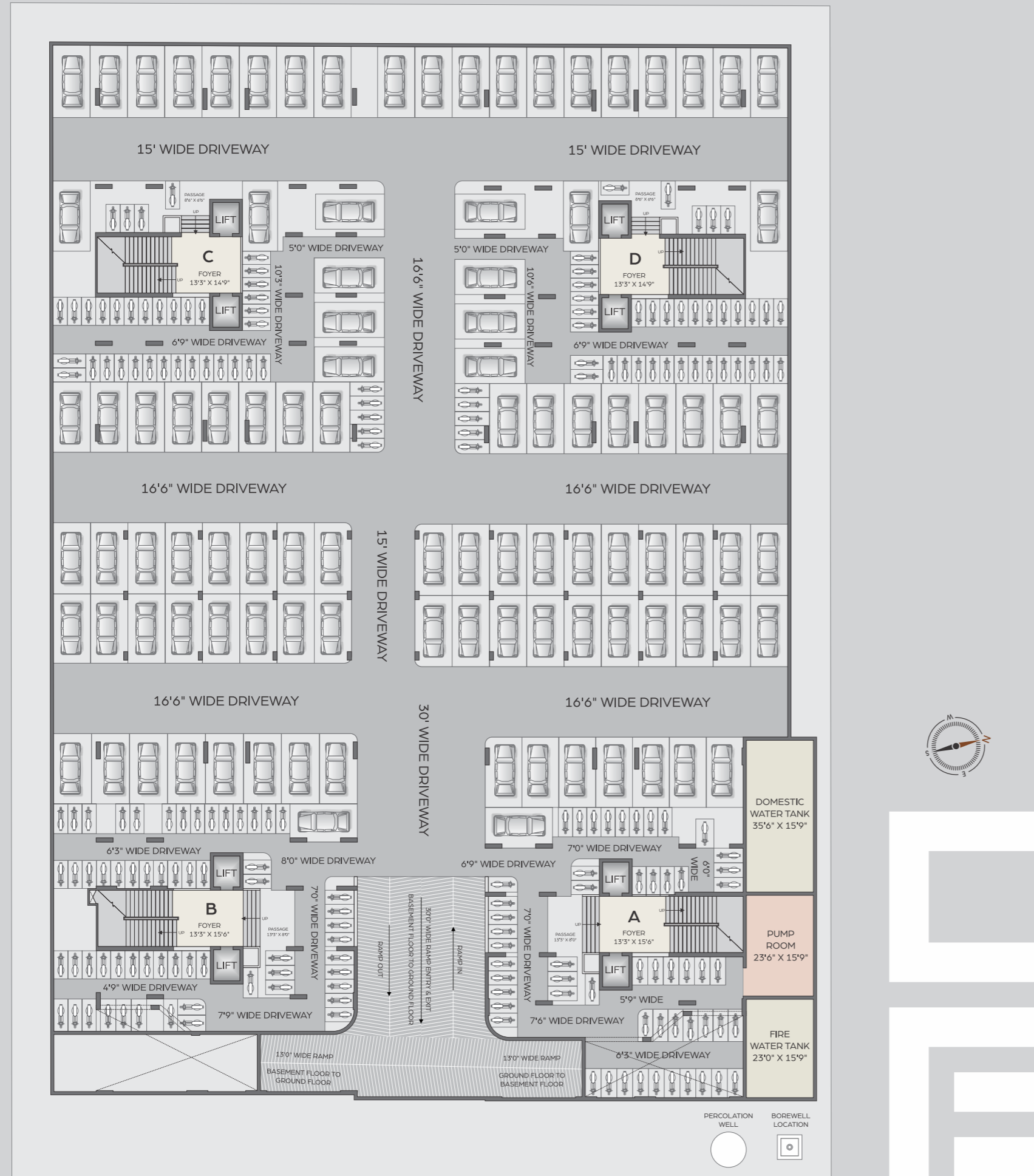




IMAGINE YOURSELF HERE...
THIS IS WHAT YOU ARE MISSING IN YOUR LIFE.



BASEMENT PLAN



40'0" WIDE EXT. ROAD

LOCATION MAP



Site Address :
SANKALP GWALA,
 Near Raj Thal Restaurant Lane, B/H. Kavisha House,
 Off. S. P. Ring Road, Ambli, Ahmedabad 380058

